

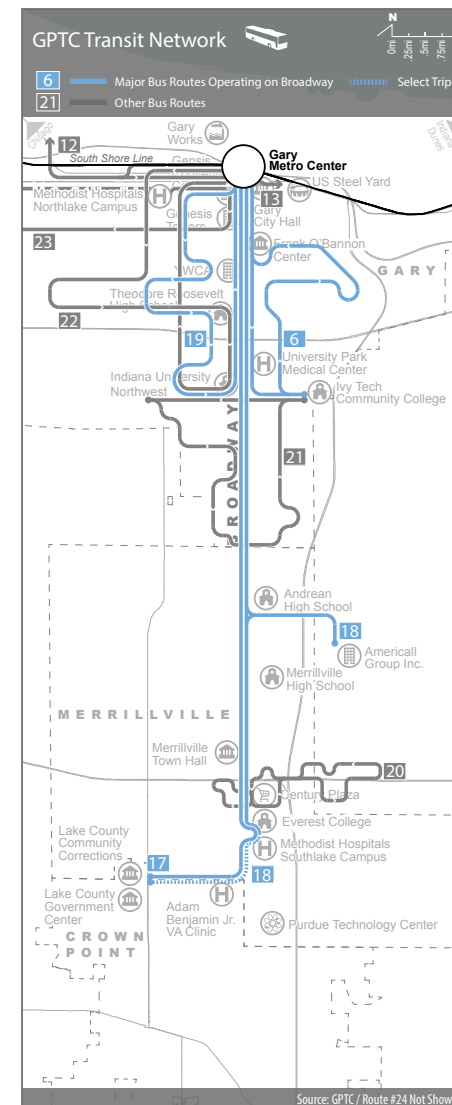
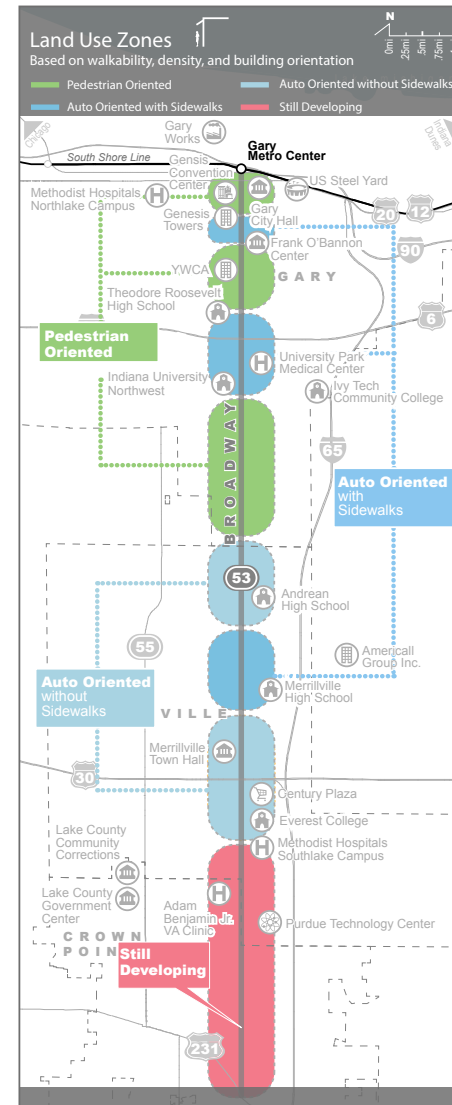


T.Y. Lin International/The Arsh Group Inc./AREA/Vicides-Schroeder Associates Inc.



The Livable Broadway Regional Plan – Its Purpose

- ◆ Create a vision for growth and development of the Broadway corridor in the City of Gary, Town of Merrillville and City of Crown Point
- ◆ Integrate transit and land use planning through transit-supportive development
- ◆ Improve the frequency, speed and reliability of transit service in the corridor
- ◆ Improve the pedestrian environment surrounding transit stops
- ◆ Improve customer access to transit



Auto more information, please visit www.livablebroadway.com

Existing Conditions

Transit and Transportation

- ◆ Transit service between Gary Metro Center and 93rd Avenue, connecting Gary, Merrillville and Crown Point
- ◆ Transit connections to the region's South Shore railroad, and inter-city bus service
- ◆ Broadway, a roadway with ample vehicle capacity in most locations

Employment

- ◆ Three strong employment sectors:
 - Health Care,
 - Educational Services, and
 - Retail Trade

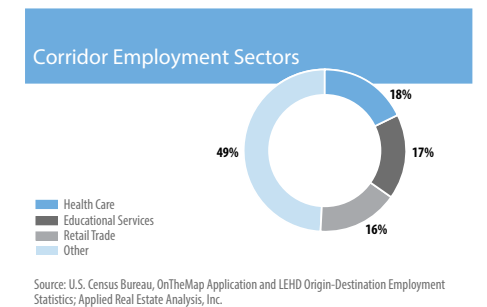
Land Use and Walkability

- ◆ Varied land uses from north to south:
 - ◆ Classified as pedestrian oriented, automobile oriented with sidewalks, automobile oriented without sidewalks and still developing (see Land Use Zones graphic)

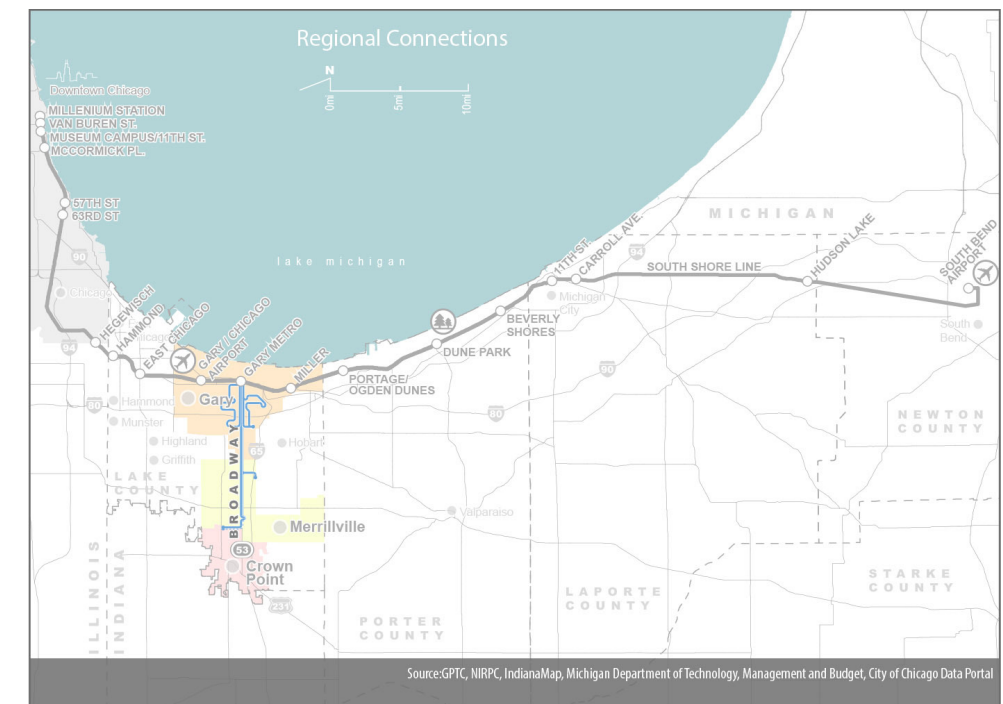
- No sidewalks or crosswalks in some areas
- Prominent institutional uses throughout providing a basis for enhanced development and improved transit
- ◆ Areas where population density and employment can be enhanced with rapid bus service

Bicycle Connections

- ◆ Links to the Northwest Indiana regional trail network via the Little Calumet Trail, Oak Savannah Trail, and Chesapeake Ohio Trail
- ◆ Buses equipped to carry bikes



Source: U.S. Census Bureau, OnTheMap Application and LEHD Origin-Destination Employment Statistics; Applied Real Estate Analysis, Inc.

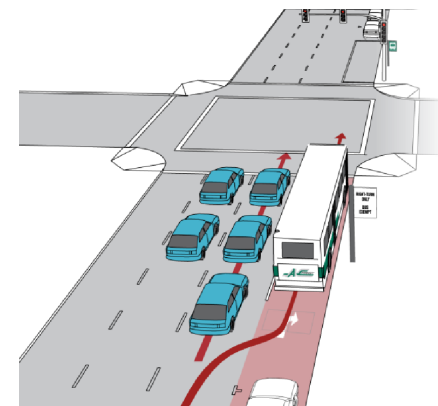


Source: GPTC, NIRPC, IndianaMap, Michigan Department of Technology, Management and Budget, City of Chicago Data Portal

Current Conditions report available at www.livablebroadway.com

Action Strategies for Transit

- ◆ Implement rapid bus service at limited stops with high ridership
- ◆ Develop a branding and marketing strategy
- ◆ Install bus bypass lanes
- ◆ Install transit signage and improve sidewalks at all stops
- ◆ Refine stop spacing and placement
- ◆ Install customer amenities including shelters, seating, lighting, bicycle racks, trash cans, and enhanced signage
- ◆ Incorporate sustainable elements into all improvements



Planning Toolbox

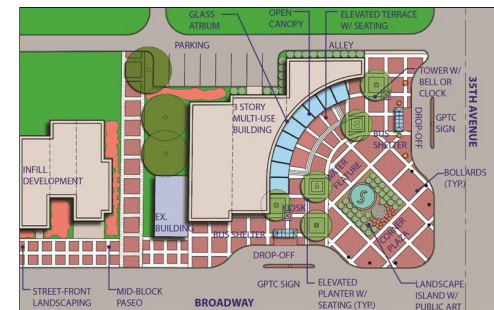
- ◆ Roadway
 - Promote development of a roadway grid to improve connections
 - Preserve on-street parking in traditional urban areas
 - Promote traffic calming on off-Broadway streets
- ◆ Pedestrian (ADA standards throughout)
 - Improve access for all users
 - Install crosswalks at all transit stops
 - Install sidewalks
 - Reduce driveway/pedestrian conflicts



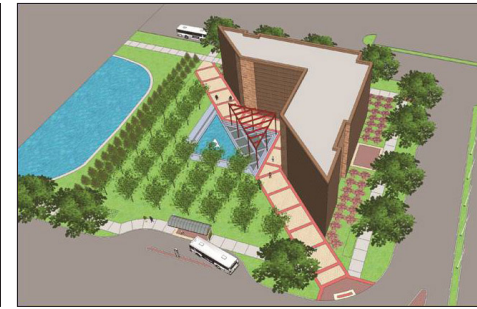
Transit Oriented Development

Promoting land use development that increases densities surrounding transit stops, and supports rapid bus service, is a major goal. Prototype concepts illustrate possibilities in areas with differing characteristics.

Institutional



Commercial



There are many opportunities for infill development (development that builds on and enhances existing facilities) to increase densities, enhance community cohesiveness and improve market conditions for transit service. Below is an example.

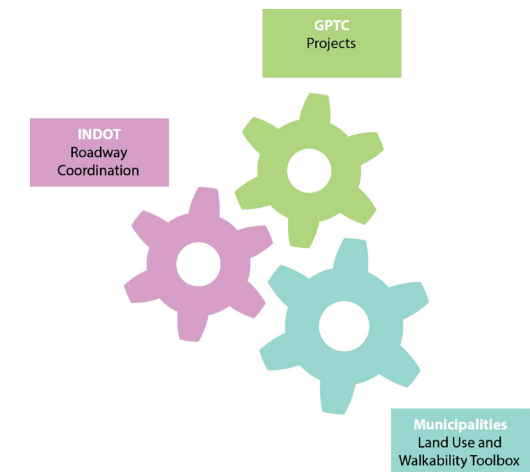
Big Box Redevelopment



Implementation

This Plan represents a coordinated transportation and land use planning effort between the: Gary Public Transportation Corporation (GPTC), Indiana Department of Transportation (INDOT), City of Gary, Town of Merrillville, and City of Crown Point who worked together to develop it. The implementing agencies will need to continue working together to fulfill the vision set forth in this planning effort.

Responsibility by Sector



Implementation Phasing by Responsible Sector

GPTC	Municipalities	INDOT
Develop Branding & Marketing Strategy	Identify and Approve Rapid Stops and TOD Areas	Install Crosswalks at all Transit Stop Locations
Identify Transit Stop Locations	Adopt or Promote This Plan	Install Bypass Lanes Along Corridor
Add Signage and Amenities	Incorporate Sustainable Elements	
Incorporate Sustainable Elements	Update Comprehensive Plans and Codes to Reflect Change	
Improve ADA Accessibility	Add Sidewalks	
Secure Funding for Rapid Bus Service		
Implement Rapid Bus Service		

- ◆ Land Use
 - Promote transit-supportive densities
 - Allow mixed-use buildings and multiple land uses
 - Connect building entrances to transit stops
 - Reduce off-street surface parking
 - Reconfigure parking to orient buildings to the sidewalk and street
 - Create public plazas and community activity centers
 - Encourage streetscaping and furnishing

